

# **East Devon Sustainable Community Plan**

## **2006 – 2016**



**Written and produced by the East Devon Local Strategic Partnership  
2006**

The district of East Devon is situated on the Devon coast in the South West of England. The East Devon District area of 314 square miles comprises the area between the River Exe and outskirts of Exeter to the west, Somerset (inland) and Dorset to the east. At the extremes, the District stretches 30 miles east to west and 15 miles north to south. Exeter International Airport is located in the District and main line rail services and the national motorway network are easily accessible. East Devon is one of eight Devon districts and, in population terms, (the population is 125,522) it is the largest in the County. East Devon is also one of the largest English districts by population. The rural nature of the area is emphasised by the population density which is only 1.5 per hectare. The District is fully parished with 68 Town/Parish Councils.

Our main settlements comprise the coastal resorts of Exmouth (Devon's largest town – pop. 34,000); Budleigh Salterton; Sidmouth; and Seaton. In the mainly rural inland area the settlements comprise Honiton; Ottery St Mary; Axminster and Broadclyst. A new settlement (Cranbrook) is planned.

Our coastline forms part of England's first and only World Heritage site designated for its natural environment. The East Devon Area of Outstanding Natural Beauty lies wholly within the District, together with the greater part of the Blackdown Hills AONB.

## **WHAT IS THE EAST DEVON SUSTAINABLE COMMUNITY PLAN?**

The aim of the ten year East Devon Sustainable Community Plan is to improve quality of life in East Devon by promoting the social, economic and physical well being of our communities. It has been produced by the East Devon Local Strategic Partnership (LSP).

The Plan develops common aims and objectives which will help to guide the way the partners from the public, private and voluntary sectors work together to provide services within the district. All partners are committed to deliver the shared vision within the plan. Partners directly involved in writing this plan are all members of East Devon Local Strategic Partnership (LSP) and its subgroups. The plan is specifically written to inform local organisations but will also hopefully be of interest to others.

This particular document is the 'umbrella' for a number of documents which together form the Community Plan suite of documents. This document sets the scene for the more detailed action plans in other strategies. Other partnerships and subgroups have helped to create and monitor those other detailed action plans. The LSP acts as a 'guardian' to ensure that these other partnerships do not lose sight of East Devon's overall priorities, and that in tackling one issue, we do not also compromise the long term vision for the area.

Often the things we must do in East Devon reflect national or regional priorities given to our organisations. The Community Plan focuses particularly on those aspects which need to be tackled in partnership, at a local level.

Thus the various documents in the suite of the Community Plan documents should influence the plans of each of the local organisations who are committed to the LSP. Since the action plans have all been drawn up in partnership, there is already local 'ownership', and commitment to them.

The Plan will not necessarily enable us to access more resources but it should assist in better targeting, and efficient use, of those we already have.

In addition to the wide range of work being carried out through separate agencies and partnerships the LSP has (through this document) selected a few priorities which it will tackle itself.

## East Devon Community Plan Themes

### Contents

#### Page No.

#### **BACKGROUND**

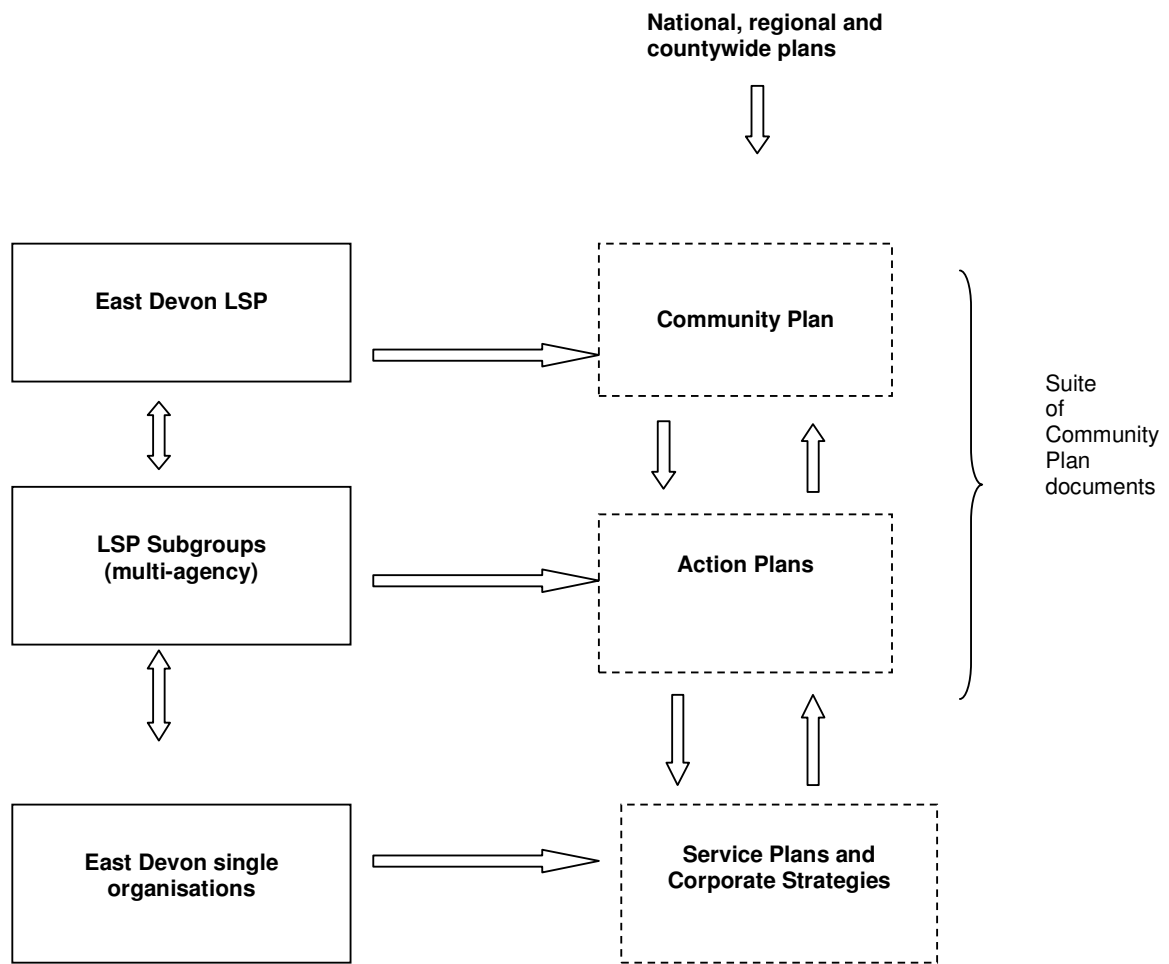
What is Behind the Plan	..	..	..	..	..	..	5
How does the Plan fit with others	..	..	..	..	..	..	6
The suite of documents	..	..	..	..	..	..	7
The LSP table	..	..	..	..	..	..	8
The Vision	..	..	..	..	..	..	9
Local Information	..	..	..	..	..	..	10-11

#### **THEMES**

Community Safety	..	..	..	..	..	..	13
Inclusion and Access	..	..	..	..	..	..	14-15
Housing in East Devon	..	..	..	..	..	..	16
Keeping Healthy and Independent	..	..	..	..	..	..	17
Culture and Leisure	..	..	..	..	..	..	18
Protecting and Enhancing the Environment	..	..	..	..	..	..	19
Economic Development	..	..	..	..	..	..	20
Developing the LSP further	..	..	..	..	..	..	21

#### **THE PRIORITIES SUMMARISED**

The Priorities	..	..	..	..	..	..	22
How does it fit with the wider Devon priorities	..	..	..	..	..	..	23-24



## **WHAT IS BEHIND THE PLAN?**

At the heart of Community Planning is partnership. This document tackles those priorities which will only be effectively and efficiently achieved through partnership working. It does not concentrate on the work of individual organisations, although the work of those organisations is reflected in some of the action plans.

This plan is local to East Devon, covering the whole district and tries to develop and achieve a strategic vision for the area. All organisations working with the people and communities of East Devon should use local information to agree on what their key priorities are, and what needs to be done to progress them.

### **Principles**

Sustainability – We should be seeking to make our communities ‘sustainable’. That is to say, nothing we do should prejudice the future of our current quality of life and preferably it will be enhanced. We want future generations to be able to enjoy what we have now.

### **Reducing Inequalities**

Although East Devon as a whole is relatively prosperous, there are many individuals who find life difficult for a variety of reasons. The LSP wants to work towards reducing the gap between them and the best off in terms of poverty, health, social support, respect and overall quality of life.

### **Consultation**

We are trying to ensure that the plans and the ideas behind them are firmly rooted in what local people say they want, balanced against statistical and other research which shows local needs.

## **DEVELOPING THE PLAN**

The first Community Plan for East Devon was produced in 2001. This plan is the third version of that document. It uses the results of surveys of local people’s priorities, as well as the deliberations of a wider group of people who have worked as ‘expert’ sub-groups of the Local Strategic Partnership, on each of the main themes.

Whilst this revision of the Plan will allow us to progress, it will still not take us to the full extent of the community involvement we hope to see in developing future plans. We also wish to see more planning at a small community level. We see Parish and Town Plans as an important part of this process and we hope to respond even more effectively to these in the future.

## HOW DOES THIS PLAN FIT WITH OTHERS?

The idea is that this plan neatly dovetails with others. It should not confuse, or conflict with, other plans. All of the plans mentioned below have been devised by multi-agency groups with public consultation.

### **Regional Plans and Strategies**

These are taken into account in the priorities and action plans.

**Devon Community Strategy/Devon Local Public Service Agreement/Devon Local Area Agreement** - these 3 documents complement each other in creating a united strategy across Devon, in the same way as the Community Plan does for East Devon. The objectives of these plans very largely coincide with our local priorities and their aspirations are therefore tied into those local priorities and action plans. This is advantageous as there are some financial benefits attached.

Some local priorities which are important specifically to East Devon, do not appear in county wide or regional plans, but these must nevertheless be tackled for the benefit of East Devon's communities.

### **Local Plan/Local Development Framework**

These are policy documents that determine how land may be used. They may occasionally seem to be a constraint on delivery of local priorities but the ethos behind them is entirely consistent with that of the Community Plan. They seek to meet (in land terms) the needs of East Devon (as expressed in the Community Plan) without any net detriment to the quality and nature of the area in which we live. This is often a difficult balance to strike.

### **Parish Plans, Town Plans, Market and Coastal Town Plans, Village Appraisals, Design Statements**

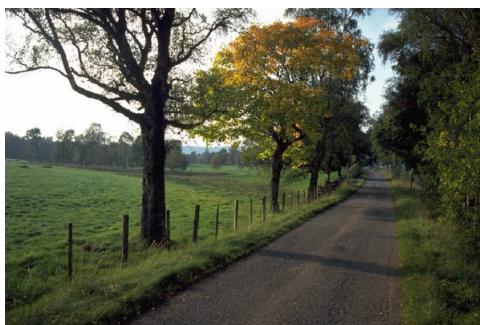
These are all very local plans devised by local people, and always with local consultation. Many of them contain actions which local people can take for themselves to improve their quality of life, but they also provide detail to support the Local Plan/Local Development Framework. They also show the wider priorities of local people, which have been influential in shaping the priorities of this District wide community plan.

### **Other multi-agency Plans**

Public bodies have a number of other plans that they are obliged by the Government to produce e.g. Housing Strategy, Community Safety Strategy. Rather than replicate this work we ensure that these strategies are compiled in an appropriate way (with multi-agency working, good research, and public consultation) and use them as action plans under the relevant sections of this Community Plan.

### **Other organisations**

Each of the organisations involved in the Community Planning process will have their own business plans, corporate strategies etc. These should link to the Community Plan although there may also be certain priorities or emphases that go beyond the scope of this document



## **What makes up the Community Plan suite of documents**

This document is the “umbrella” Community Plan. Whilst it stands on its own to reflect the activity of the Local Strategic Partnership, there are many other local strategies which support it.. A list of the main relevant strategies is below. Each of these is a multi-agency document upon which there has been public consultation. The Local Strategic Partnership has approved all of these local documents, as supporting its own overall aims.

- The Local Plan - This tells us in land terms, what can be developed and in what ways, to meet the communities’ and national needs and aspirations.
- East Devon Community Safety Strategy - A plan tackling safety, crime and disorder
- The Cultural Strategy - A plan for arts, sports, and the many other activities features and heritage that make our area special
- The Play Strategy - A document reflecting the need for, and ambitions for, children’s play in our area.
- The Housing Strategy - A plan for public and private housing as it relates to our residents.
- The Biodiversity Action Plan - A plan which looks at the balance and the prevalence of species living in the natural world around us.
- AONB Management Plans - These plans set out action for our Areas of Outstanding Natural Beauty.
- The Waste and Recycling Plan - A plan for managing the solid waste we produce.
- The Transport Strategy for East Devon - A plan for all forms of local transport.
- Local Transport Plan - A plan for transport across Devon.
- The Economic Development Strategy - This looks at the world of work, and how we are employed.
- The Children and Young Peoples Plan - This plan specifically addresses the needs of the younger generations.

**Places around the LSP table**

**Community representatives**

- Consultation data
- Research Data
- Other partners, regional and government strategies and

*Communication of Community Plan Action*

<b>Primary Care Trust</b>	<b>East Devon District Council</b>	<b>Devon County Council</b>	<b>Parish/Town Council rep.</b>	<b>Voluntary &amp; Community sector rep.</b>	<b>Business sector rep.</b>	<b>Police</b>
---------------------------	------------------------------------	-----------------------------	---------------------------------	--	-----------------------------	---------------

**Other community interests**

**Older People's group representative (AGILE partnership)**

**Children & Young Peoples' group representative**

**The LSP table**

- *Joint commitment*
- *Joint effort*
- *Joined solutions*
- *Joint monitoring*

**Economic Development (Business partnership) representative**

**Environment subgroup representative**

**Economic needs Environmental needs**

*Cross boundary issues*

<b>Health subgroup representative</b>	<b>Social Inclusion &amp; Access subgroup representative</b>	<b>Community Safety partnership representative</b>	<b>Leisure &amp; Culture subgroup representative</b>	<b>Housing partnership representative</b>
---------------------------------------	--	--	--	---

*Principles of sustainability & equalities*

**Community wellbeing needs**

## The Vision for East Devon

Using information on local needs and wants the Local Strategic Partnership has created a summary view of how we would like to see East Devon in the next ten years. We are using this to help us understand what needs to be done, or done better

By the year 2016 East Devon will be a District where:

- ❑ Everyone has adequate affordable housing or other housing appropriate to their needs;
- ❑ Everyone is given the opportunity to help shape the decisions which affect their lives;
- ❑ Everyone feels included, valued and safe within our communities;
- ❑ Everyone is able to live healthy, independent and fulfilled lives;
- ❑ There are appropriate transport and other connections within and between our many and widespread communities
- ❑ Everyone has easy access to key information and services when and where they need them;
- ❑ There is a vibrant working environment where community and economic activity improve and sustain our distinctive environment and cultural heritage;
- ❑ Everyone has lifelong access to opportunities to learn and to develop the skills that they and the community need;
- ❑ Everyone is able to find work (paid and voluntary) which suits their needs;
- ❑ Everyone receives an adequate income to meet their basic needs;
- ❑ Our visitors are encouraged to recognise and value East Devon as a distinctive destination where they are welcomed and will return;
- ❑ Our actions do not compromise the economy, communities or environment of future generations.



## **LOCAL INFORMATION**

### **What we are told from consultations**

We know that East Devon has a unique blend of notable characteristics.

On the positive side it has a healthy population, low crime and special countryside and coast. But East Devon is also characterised by low wages, a high level of part-time working, a seasonal economy and a high proportion of older people. There is high influx of population both by inward migration and seasonally. There are also some access difficulties due to the rural nature of the district and dispersed towns, pockets of economic deprivation. The high cost of housing is an issue for many people. 30% of our population live alone.

All these facts influence local people's priorities and have influenced the community plan.

Wide ranging other survey work was carried out across East Devon in 2002 on 'Quality of Life Issues'. These results were further checked in 2004. The LSP has also received the many pieces of consultation carried out in the last five years. In fact a major piece of work reviewed all of the consultations carried out by LSP partners in the last 5 years.

We have used all of this work to help set the priorities in this plan.

East Devon LSP wants to see individuals and communities becoming more involved in determining their own futures. If we help to develop people in our communities so they can become more active, encouraging greater community participation then there is evidence that local people will feel better about their place in the community and be better placed to influence local affairs. When we talk about communities we mean both geographical communities and communities of interest.

### **What we know from research and other local work**

In keeping with an overarching principle of social inclusion the LSP wants to pay particular attention to the needs and wishes of isolated, marginalised and minority groups. Despite its overall prosperity East Devon includes one ward which is in the top 25% most deprived nationally (2000 Index of Multiple Deprivation). In 2004 a new index was used which uses smaller population units comprising about 1500 people. This shows that in East Devon, two parts of Exmouth (part of Littleham and Exmouth Town wards) are the most deprived in the District, although neither of these is in the worst 25% nationally. We are now able to identify smaller geographical areas (using national and local statistics) where people face particular difficulties.

East Devon has the third highest percentage of older people of all the Districts in England.

In the very rural areas, we also know that there are small pockets of people who may be hard to identify from area statistics but who have financial difficulties, are geographically isolated and have difficulty getting the services they need.

Other groups which may need special attention or support are black and minority ethnic groups at 0.7% of the population, and lone parent households. In East Devon, young people may also be regarded as a minority group.

Most of the villages and towns in East Devon are active, vibrant communities, where voluntary and community activity plays a huge role in enhancing people's quality of life. There are 150 community halls of various kinds which provide a focus for community life. The LSP wishes to support and encourage local activity, and where necessary will develop an approach to do so. This principle is in the adopted 'Community Compact'.

A key challenge over the next few years will be the development of the new community, Cranbrook, between Broadclyst and Whimple which is necessary in order to accommodate projected population

growth in the Exeter area. The LSP has high ambitions for Cranbrook and will do everything in its power to ensure that it grows into a sustainable, exciting and desirable place to live which will attract a wide range of new residents. Near to Cranbrook will be other high technology commercial, industrial and transport development.

There are other parts of the District which have not developed to meet current needs. These areas are in need of some regeneration and in the initial phases we are looking at Seaton and Exmouth.

### **Community Priorities across Devon which we also need to address**

The Devon Strategic Partnership (DSP) published its Devon-wide Community Strategy in 2004. Based on wide consultation with the public and with organisations, the Devon Community Strategy has seven key goals.

- Homes for all – building for the future
- Improving the life chances of children and young people
- Protecting and improving our environment
- Working for sustainable wealth creation
- Making Devon an even safer place to live
- A county for everyone – social inclusion
- Promoting a healthy and caring Devon

The DSP is committed to taking action where things can best be done at county level. It has therefore highlighted only two or three activities per theme. A great deal of local activity, including this plan, will contribute to the overall county wide community goals.

Devon County Council with a wide range of partners has also agreed with central Government to pursue a number of county wide priorities through a 'Local Area Agreement' (LAA), which is supplemented by a 'Local Public Service Agreement'. The LPSA specifies some ambitious targets over a range of 12 priority areas. If the targets are successfully achieved, there will be significant government rewards which will enable services to be further improved and developed. A summary of how East Devon's Community Plan priorities will support the LAA & LPSA is shown later in the document.

## **The Themes**

## **COMMUNITY SAFETY**

**This section seeks to address the community's priorities relating to crime and disorder. It addresses the 'vision' section relating to people feeling safe**

### **Background information**

East Devon has one of the lowest rates of crime & disorder in the South West, and in the country as a whole. Although it is one of the safest places to live, the Crime and Disorder Act acknowledges that more can be done by local agencies to help reduce levels of crime and disorder. Fear of crime is also an issue in East Devon. Consequently the East Devon Community Safety Partnership was formed in 1998 involving the Police, the District and County Councils, Devon Fire and Rescue Service, the Probation Service and the Health agencies. The partnership is also supported by local groups. Much progress has been made through the Community Safety Strategy for East Devon.

### **Challenges**

Whilst the rate of crime in East Devon remains very low, the fear of it is disproportionately high. For instance residents have estimated that as many as 70+ homes in 1000 are likely to be burgled whilst, in reality less than 7 in 1000 are likely to suffer such crime, one quarter of the national average. Domestic burglary has reduced by a quarter between 2002 and 2005. Equally vehicle crime has dropped by a fifth in the same period. That said, no crime is acceptable, and the Community Safety Partnership (acting as an expert sub-group for the LSP) is committed to reducing crime, disorder, anti-social behaviour, and the fear of them throughout the District. We have local action groups which are empowered within their local communities.

### **Multi-agency Action Plans for Community Safety**

East Devon Community Safety Strategy

### **The single priority for LSP itself to tackle**

Tackling Anti-social behaviour

## **INCLUSION AND ACCESS**

**This section seeks to address the issues of social inclusion, valuing people, access to transport and information which are raised in the 'Vision'**

In accordance with the 'vision' the LSP wants to try and ensure that everyone in East Devon has the opportunity to play a full part in community life and to be able to get information about services which are available. It is also important to try and ensure that services are equally available across the whole of the District, in rural and urban areas. This theme is therefore partly about enabling people to travel in order to access services, but also about ensuring that those most likely to need services are able to get them in a way that suits them.

Among the target groups are: children and young people, young parents and lone parents, people with disabilities or long term medical conditions, older people (particular the most frail or disabled), people suffering or fearing prejudice, and people of any age who need access to education, training or employment.

### **Background**

Almost 7% of households consist of lone parents with dependent children. 25% of East Devon's population is under 25 years of age. Of these, a quarter live in the 5 main towns and 75% of young people live in the more rural areas. 31% are over retirement age, which is the third highest proportion of any District in the country. Just over 20% of the population describe themselves as having a limiting long term medical condition, which is higher than in the general population of the UK. Only 0.7% of the population is from black and ethnic minority groups.

East Devon's road infrastructure has the M5, A30, A303, A35, A377 & A376 together with the Waterloo to Exeter Rail Line, a branch line to Exmouth, and Exeter International Airport.

The population is concentrated around the 7 towns of the District although the area is principally rural in character, which presents special challenges for transport and delivery of services.

There are numerous footpaths, cycleways and bridlepaths within the District. With a coastline, the opportunities for sea travel also exist.

The excellent range of voluntary and community groups in East Devon should be supported. The Community Compact sets out some basic principles.

Whilst not serving all needs East Devon has a good network of Community Transport schemes providing around 6000 journeys per year. Almost one million public transport journeys are made per annum on subsidised bus services. Just over one third of eligible people claim their bus pass for half fares. 18% of households do not have a car. Over 63% of workers travel to work by car (higher than national average) and only 4.5% by public transport (more than 3 times lower than national average).

Public consultation suggests that local people are concerned about access to services, particularly in the most rural parts of the District. They are also keen to have easier access to information about services.

### **Challenges**

In our towns we have recognised that specific areas have particular difficulties, which we need to tackle through regeneration and community support initiatives.

Physical access to services, including education and training, work, leisure and social activities is difficult for many.

Youth services are provided by a wide range of voluntary agencies, together with Devon Youth Services. Many of the rural areas have poor access to youth facilities.

The opportunities for independent travel by young people are especially constrained.

The ageing population will make high demands on health and social care services.

The low numbers of people from black and minority ethnic groups and non Christian faith groups raises questions about the level of support they may receive.

Housing provision needs to be appropriate to people's needs, particularly in relation to health and age

Everyone needs to be able to access leisure, cultural and learning opportunities, both physically and financially.

The above are clearly and closely/mutually inter-related and need to be considered as a seamless 'whole' rather than separate issues.

**The single priority for LSP itself to tackle**

To target community support work into those geographical areas where we have recognised difficulties.

## **HOUSING IN EAST DEVON**

**This section seeks to address the Community Priority for affordable housing. This also tackles the issues of affordable, adequate and appropriate housing raised in the 'vision'**

### **Background information**

One fifth of housing is rented, 78% of this is owned by the Council. A quarter of Council homes are 'warden assisted' schemes. There are over 3600 households on the Council's Housing register, waiting for permanent and appropriate housing. An estimated 18% of owner-occupied dwellings are in substantial disrepair.

Not only is poor access to housing causing social problems but it impacts on local economic viability. A 'New community' (Cranbrook) is planned in East Devon. This provides a unique opportunity to plan well for new housing.

### **Challenges**

Due to large in-migration, high numbers of second homes, low average incomes, and high housing prices, many local people find themselves unable to buy their own home. In an attractive environment development land is hard to find.

2.2% of all households are in 'Housing Need'. 22% households are in "fuel poverty".

### **Multi-agency action plans relating to Housing**

The action plan is the East Devon Housing Strategy

### **The single priority for LSP itself to tackle**

Ensuring a good quality affordable home is available to far more households resident in the district, and that each home is adequate in size and suitably located for the occupants.

## **KEEPING HEALTHY AND INDEPENDENT**

**This section incorporates the community priority of improved healthcare. It seeks to address the 'vision' item of people living healthy, and independent lives**

### **Background**

The residents of East Devon have a good level of overall health, being below average in almost all areas of disease and mortality. A wide range of services are available however to support people who either are at risk of ill health or suffer from ill health in some way.

### **Challenges**

Over 20% of households include people with 'long term limiting illness'. 2.3% of our population receive Disability Living Allowance, and 2.9% receive Attendance Allowance. 3080 people receive Incapacity Benefit, 745 receive Severe Disablement allowance

11% of adults are providing unpaid care for others. 28% of adults smoke, around 30% of young people have taken illegal drugs. 2.4% of under 18's become pregnant, almost a third leading to termination. 5.1% of all births were of low birthweight. 16,000 local people have emotional or psychological problems each year for which they seek help

### **Multi-agency action plans relating to Health and Independence**

- ❑ Increase awareness of what constitutes an environment which promotes mental well being and ensure steps are taken that support further development of the environment.
- ❑ Increase opportunities for people to take part in activities within their community which promote mental well being and social inclusion e.g. physical activity, meaningful occupation and good nutrition.
- ❑ Increase access to a wide range of self help and supported self help options for people experiencing mental distress e.g. self help materials and self help activities
- ❑ Increase awareness about serious mental illness and common mental health problems within the workplace in order to reduce stigma and help people retain employment.
- ❑ Increase opportunities for parents to access help to develop their parenting skills and coping strategies
- ❑ Ensure mental health and mental wellbeing are considered in strategy development and implementation

### **The single priority for LSP itself to tackle**

Positive mental health (it is a fundamental requirement upon which other aspects of health and social improvement rely).

## **CULTURE & LEISURE IN EAST DEVON**

**This section seeks to address the Community Priority of young, & older people's facilities and particularly Leisure Facilities. The section also contributes towards the 'vision' issues of fulfilled lives and cultural heritage**

### **Background**

It is estimated that 44% of the population use Sport and Leisure facilities locally each year, 7% visit local museums and galleries, 41% theatres and halls, and 68% use parks and open spaces

There are 9 public leisure centres and 4 public swimming pools, and 2 cinemas in East Devon. Local cultural events include the Tar Barrels, Hot Pennies, regattas, carnivals, shows, and the Folk Festival. A local playing pitches study shows a particular and increasing shortage of Junior football and rugby pitches.

78% of adults describe themselves as Christian, less than 1% claim another religion. East Devon is in the top quarter of all areas in the country for the level of play equipment provision.

Our countryside is also part of local culture. This is exemplified in the special nature of our World Heritage Coast and Areas of Outstanding Natural Beauty.

### **Challenges**

#### **Multi-agency action plans relating to Culture and Leisure**

East Devon Cultural Strategy  
East Devon Play Strategy

#### **The single priority for LSP itself to tackle**

Maintaining and improving upon opportunities for social networking and integration.

## **PROTECTING AND ENHANCING THE ENVIRONMENT**

**This section addresses the community priorities of planning and development control, cleanliness, waste management, and environmental protection. The section also addresses the ‘vision’ elements relating to a vibrant working environment, distinctive environment, and a distinctive destination, and avoiding compromise of our environment through our other actions.**

### **Background**

East Devon has an area of 81,477 hectares containing 68 parishes. There are two areas of Outstanding Natural Beauty (AONB) covering 66% of the area – the East Devon AONB and the Blackdown Hill AONB. There are 5 areas of Great Landscape Value and 25 Sites of Special Scientific Interest either wholly or partially within the District. In addition, the District Council manage 7 local Nature Reserves which protect the local flora and fauna and engage local people. Finally the World Heritage Coast in East Devon extends from Orcombe Point to the Dorset boundary.

East Devon is in the top 25% nationally for its recycling rate and there are plans for significant improvement.

We have green flags for the quality of public spaces. There is only one small location in East Devon where air quality is under review due to traffic pollution.

### **Challenges**

With much development in East Devon the landscapes and townscapes must not adversely suffer. High quality and sensitive design is required.

The impact of foot and mouth, changes in the Common Agricultural Policy and a general trend in decline of farm incomes has meant the agricultural sector faces an uncertain future. According the Devon Rural Strategy average farm incomes in the county are below the national average of £10,600 pa (MAFF 2001). East Devon is as dependent on farming as the rest of the county and the small holdings (average farm size 43 ha compared to 57 ha for south west) are an integral part of the landscape and the way of life of the district.

There is a constant need to improve our performance on solid waste control from households and traders, and also to maintain our public space against littering, graffiti and vandalism.

The natural environment is continually under pressure from development, agricultural change, forestry and mineral workings across the district and there has been loss of habitat (orchards, hedgerows and heathland) and species (barn owl, heath lobelia and high brown fritillary).

Underpinning the challenge for the environment is undoubtedly the effect of climate change. Sea level measurements in Cornwall have revealed a rise of around 200mm since 1916. Climate change scenarios predict 5 to 15% wetter winters and more common rainfall, there will also be higher tides causing increased coastal flooding. Also the use of natural resources is becoming a serious issue with household waste increasing in region by almost 5% between 2001 – 2002 and 2003 - 2004.

### **Multi-agency action plans relating to Protecting and Enhancing the Environment**

Biodiversity Action Plan

Devon County Waste Local Plan (A Municipal Waste Management Strategy for Devon)

### **The single priority for LSP itself to tackle**

- To seek to improve access, value, quality and use of our local environment in order to improve the physical and mental health of local communities.

## **ECONOMIC DEVELOPMENT**

**This section addresses the community priority of promoting the local economy which has focussed on farming, markets and tourism in the past. It also tackles the ‘vision’ elements relating to a vibrant working environment, economic activity improving and sustaining environment and culture, ability to find work, and receiving an adequate income. It tackles the issues of tourism where East Devon should be a welcoming destination to which people return.**

### **Background**

The District's 4,700 businesses provide work for some 53,000 employees. Some four million overnight visitors stay in the District each year, added to these are nearly two million-day visitors. There are 7 Tourist Information Centres in the district.

Unemployment is low but these headlines mask some major challenges. The age profile of the district is heavily skewed to the middle aged and elderly; in part because young people leave the area to pursue careers elsewhere. Average weekly wage levels are low; £370.60 per week in East Devon compared to £475.80 per week nationally. East Devon has one the highest gaps between house prices and incomes in the country.

East Devon can enhance its' natural strengths through an economy that facilitates innovation and diversity within strong urban and rural communities. Our market and coastal towns can offer a much wider range of local employment opportunity and build on their visitor heritage. The rural areas can develop a breadth of enterprise capable of sustaining not only the fabric of the countryside but also the culture and diversity of their resident communities. The area east of Exeter can perform a strategic economic function benefiting not only East Devon but also the wider sub-region.

We recognise that to develop existing and new businesses (and housing aspirations) a new community and industrial land will need to be developed near Rockbeare and that certain parts of existing towns (starting with Exmouth and Seaton) require some regeneration. This is an opportunity for major impact on expanding business opportunity, economic aspiration and certain 'high value' businesses.

Learning opportunities for adults in East Devon are available from a wide range of providers - the adult and community learning service through the community colleges, the Library service, Further Education colleges and a range of voluntary organisations. In addition, private training providers offer many opportunities for skills development for people in work and seeking work.

Information, advice and guidance on work and learning is available at a variety of venues as well as by phone and on-line. Learning opportunities exist for all ages for people of all levels of ability, from those with specific learning disabilities through to those wishing to enter higher education. Courses for adults with qualifications that are below NVQ2 (GCSE grade C), including support for essential skills, can often be available at no cost to the learner.

There are many venues throughout East Devon where learning is offered and some courses can be taken out to groups of learners.

### **Challenges**

A low wage economy is coupled with transport and other infrastructure which often fails to reflect the needs of modern business and the work force that sustains them. There's a shortage of land and buildings for work related investment and expansion. The industries that maintain the fabric of the countryside, farming and forestry for example are experiencing serious difficulties. Other sectors valuable to the countryside such as tourism are often low wage, small-scale and fragmented.

**Multi-agency action plans relating to Economic Development** - Economic Development Strategy

**The single priority for LSP itself to tackle** - Increasing opportunities for raising average income through regeneration.

## **DEVELOPING THE LSP FURTHER**

**This section seeks to better plan to deliver the overall community priorities in a way that does not compromise the economy, environment or communities of East Devon (and wider). It also helps to ensure that, in accordance with the 'vision', everyone is given the opportunity to shape the decisions that affect their lives**

### **Background**

The LSP has the opportunity to increasingly 'join up' public consultation, use of public buildings, and use of other public resources. Most significantly it needs to develop the process of Community Planning over time so that it can be increasingly driven through local communities.

### **Challenges**

- To ensure that there is a balance between government demand and community leadership in guiding local organisations
- To ensure that whilst effective and widespread consultation takes place that this does not lead to overload, does not ignore the special but significant needs of small minorities, and does not raise unrealistic expectations.

### **Action Plan areas and Priorities**

- Monitor progress on priorities and their effectiveness in making a difference
- Promote achievements
- Co-ordinate and improve consultation (including Parish Plans)
- Create relevant baseline standards for LSP partner organisations
- Promote East Devon's needs in the wider country, regional and national fields
- Support the Devon Compact with the community and voluntary sector

## Summary of LSP's Priorities

The single most important priorities of this plan for the LSP to tackle, as a body, are:-

Community Safety	Tackling Anti-social behaviour
Inclusion & Access	To target community support work into geographical areas where we have recognised difficulties
Housing in East Devon	Ensuring that a good quality affordable home is available to far more households resident in the district, and that each home is adequate in size and suitably located for the occupants.
Keeping Healthy & Independent	Positive mental health (it is a fundamental requirement upon which other aspects of health and social improvement rely).
Culture & Leisure in East Devon	Maintaining and improving upon opportunities for social networking and integration.
Protecting and Enhancing the Environment	To seek to improve access, value, quality and use of our local environment in order to improve the physical and mental health of local communities
Economic Development	Increasing opportunities for raising average income through regeneration.

These single priorities will be addressed by the LSP itself through projects over the time frame of the East Devon Sustainable Community Plan.

How it all fits with the Devon priorities

East Devon Community Plan priorities	Devon Strategic Partnership priorities	Devon PSA priorities	Devon LAA priorities
<ul style="list-style-type: none"> <li>• Tackling anti-social behaviour</li> <li>• Community support, targeted to areas with difficulties</li> <li>• Affordable and suitable housing</li> <li>• Positive mental health (as a basis for other health and social improvement)</li> <li>• Culture as a means to social integration</li> <li>• Access, value, quality, and use of the environment for physical and mental health</li> <li>• Increasing average incomes through regeneration</li> </ul>	<ul style="list-style-type: none"> <li>• Making Devon safer</li> <li>• Social Inclusion</li> <li>• Homes for all</li> <li>• Healthy and caring Devon</li> <li>• Improving the life-chances of children and young people</li> <li>• Protecting and improving our environment</li> <li>• Sustainable wealth creation</li> </ul>	<ul style="list-style-type: none"> <li>• Improved safety of victims of domestic violence</li> <li>• Improving volunteering and engagement with young people</li> <li>• Preventing homelessness, reducing repeat homelessness in young people</li> <li>• Reducing obesity through healthy eating and activity.</li> <li>• Older people's independence and choice through self managed care</li> <li>• Improving life-chances and esteem of young people. School attendance, skill levels and benefit take-up</li> <li>• Improving the 4 largest urban environments, and increasing public transport use.</li> <li>• Increasing activity through access to the countryside</li> <li>• Increasing benefit take-up by older people.</li> </ul>	<ul style="list-style-type: none"> <li>• Reduced domestic violence &amp; abuse</li> <li>• More people volunteering and engaged with communities</li> <li>• Safe secure and suitable housing</li> <li>• Health improved through physical activity. Children and young people to have good physical and mental health</li> <li>• Improve life-chances of the most vulnerable children and young people</li> <li>• Public spaces more attractive, safer and cleaner</li> <li>• Informed, active, healthy and safe older people in their own homes</li> </ul>

**If you would like to comment on the Plan or to contact us for more  
Information, you can do so via**

Peter Jeffs  
Corporate Director – Communities  
East Devon District Council  
Council Offices  
Knowle  
Sidmouth  
EX10 8 HL  
Tel. No. 01395 517452  
Fax No. 01395 517508  
E-mail [pjeffs@eastdevon.gov.uk](mailto:pjeffs@eastdevon.gov.uk)  
[www.eastdevon.gov.uk](http://www.eastdevon.gov.uk)



**Written and produced by the Local Strategic Partnership  
April 2006**