

# Trinity Hill

Local Nature Reserve



Trinity Hill is a large area of lowland heath, lying two miles outside the town of Axminster. The reserve is a fine example of heathland with many interesting and unusual plants and animals. Much of the surrounding area has been taken over by forestry and turned into coniferous plantation, but Trinity Hill remains a beautiful natural oasis in this evergreen desert.



Ling

## East Devon District Council LNRs

East Devon District Council manages a number of Local Nature Reserves, for the protection of wildlife and for public enjoyment.

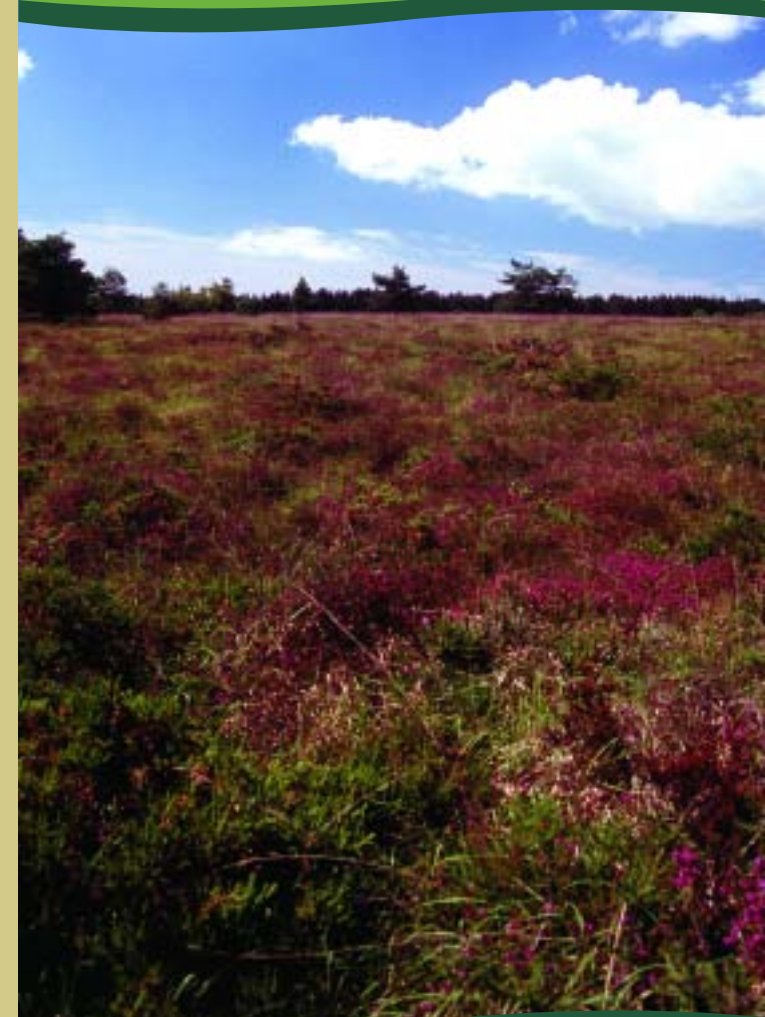


## How to get there:

From Axminster take the A35 towards Lyme Regis. Just before Ramond's Hill turn right along Trinity Hill Road. After one kilometre, the car park for the nature reserve is on your left.

For more information about other Local Nature Reserves and a range of activities for you to enjoy in East Devon, please contact the Countryside Service.

East Devon District Council  
Knowle  
Sidmouth  
Devon  
EX10 8HL  
Tel: 01395 516551  
[www.eastdevon.gov.uk](http://www.eastdevon.gov.uk)



*An East Devon District Council  
LNR for you to enjoy*

## Trinity Hill

To the West, Trinity Hill has breathtaking views across the Axe Valley towards the town of Axminster. On this side of the reserve the heathland is regenerating after being lost beneath a jungle of bracken. Notice the difference in vegetation between this side of the reserve and East of the road.

During the day, moths lie-up in the heathers waiting for nightfall. The heath supports a vast number of different moths, some with beautiful or odd names such as true lovers knot, peppered moth or the drinker!

Patches of bare, sandy soil warm very quickly in the sun and attract animals that require heat, like common lizards.

Look out for linnets singing from tall shrubs on the heath in the late summer. This bird is doing well in the LNR, although numbers are falling nationally.



The drinker



Peppered



True lovers knot



Bell heather

ling

Cross-leaved heath

## A haven for heather

The heathland at Trinity Hill comprises three different types of heather which are easily distinguished.

**Bell heather** – Larger, deeper purple flowers than ling, growing in bunches on the branch. The leaves grow in rosettes of three.

**Ling** – Look for tiny pinky-purple flowers growing densely along the branches of the heather, with pairs of leaves either side of the branch.

**Cross-leaved heath** – As its name suggests the leaves are arranged in a cross of four around the stem, the foliage is much paler than the other two heathers, as are the flowers which are large, pink and grow at the end of the branches.

### Access:

The car park lies just off the road in the centre of the Local Nature Reserve and a permissive path leads from here around the perimeter of Trinity Hill. From the car park, cross the road to the western side of the reserve to enjoy the splendid views across the Axe Valley. Paths can become very muddy in wet weather and it's therefore advisable to wear stout, waterproof footwear. It will take you about an hour to walk around the perimeter of Trinity Hill Local Nature Reserve, so give yourself enough time to stop and take in the views.