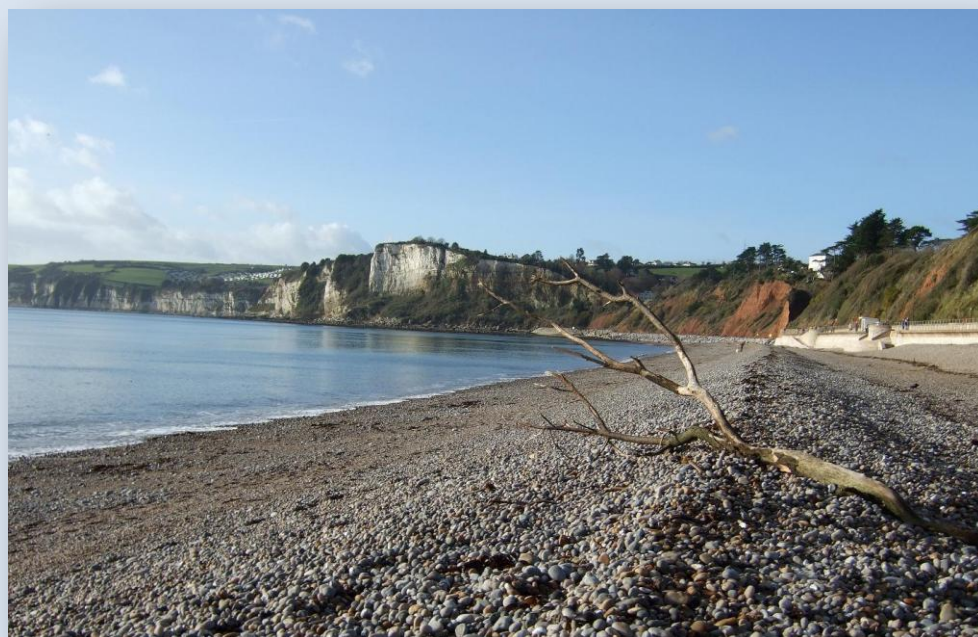


# The Knowledge



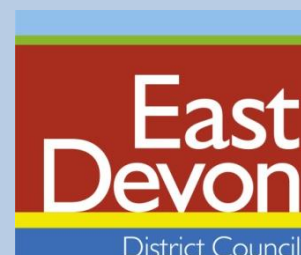
Seaton beach • Photo by Debbie Meakin

30 October 2009

## This week in The Knowledge

- ❑ Chairman's engagements
- ❑ New documents in the Members' Area
- ❑ Community messaging service
- ❑ Donate, don't dump!
- ❑ Find out more about funding
- ❑ Environmental Health performance
- ❑ IDeA news
- ❑ Communities at the heart of our landscape
- ❑ Financial management e-learning scheme
- ❑ Update from the LGA
- ❑ Car park lighting
- ❑ RSN news
- ❑ Exmouth Visitor Centre Trust
- ❑ In the press

Meeting	DSO	Date	Time	Location
Asset Management Forum	CL	Monday 2 November	9.30am	CANCELLED
Licensing & Enforcement Sub-Committee	CL	Tuesday 3 November	9.30am	CANCELLED
Standards Committee	CEH	Tuesday 3 November	<b>9.30am</b>	Committee Room
Annual Parishes meeting	DM	Tuesday 3 November	6.30 for 7pm start	Council Chamber
Elizabeth Hall Advisory Forum	CL	Tuesday 3 November	7.00pm	Exmouth Town Hall
Accessing planning applications on line	DV	Wednesday 4 November	4.30pm	Council Chamber prior to meeting of Executive Board
Executive Board	DV	Wednesday 4 November	5.30pm	Council Chamber
Licensing & Enforcement Sub-Committee	CL	Tuesday 10 November	9.30am	CANCELLED
Assessment & Hearings Sub / Review Sub-Committee	CEH	Tuesday 10 November	10.00am	CANCELLED
Quality Parishes and Delegated Planning Applications Working Party	CEH	Tuesday 10 November	2.00pm	Members' Area
Local Development Framework Panel	HJ	Thursday 12 November	9.30am	Council Chamber
Audit and Governance Committee	CEH	Thursday 12 November	2.30pm	Postponed until <b>3 December</b>



Council Offices  
Knowle  
Sidmouth  
EX10 9BL

[www.eastdevon.gov.uk](http://www.eastdevon.gov.uk)

## Democratic Services Officers:

Diana Vernon 01395 517541	Christopher Holland 01395 517543	Hannah Jarvis 01395 517542	Chris Lane 01395 517544	Debbie Meakin 01395 517540	Rachel Perram 01395 517542
------------------------------	-------------------------------------	-------------------------------	----------------------------	-------------------------------	-------------------------------

Would Councillors please pass their apologies to Democratic Services whenever they are unable to attend a meeting so that post can be sent or withheld as appropriate. Please don't forget to check your pigeon holes whenever you are visiting Knowle.

If you would like a copy of the papers relating to any of the above meetings, please contact the relevant Democratic Services Officer. (All the above meetings are at Knowle, unless otherwise specified).

Click [here](#) to view agendas and minutes on the Council's website. Click [here](#) to view planning applications online.

## Chairman's engagements

### Friday 30 October

Chairman and Mrs Liverton attending the Centre Stage production of 42<sup>nd</sup> Street.

### Saturday 31 October

Chairman and Mrs Liverton attending a performance by the Band of the Royal Marines with special guest, Simon Weston, in aid of the Royal Star and Garter Homes.

## New documents in the Members' Area

### Feedback from outside bodies

- ❑ **Honiton Library Advice and Information Centre** – Minutes of the Management Committee meeting held on 27 August 2009.
- ❑ **The East and Mid Devon Community Safety Partnership** – Minutes of the Steering Group meeting held on 16 September 2009.

The above documents are in the 'Feedback from Outside Bodies' file on the bookcase in the Members' Area.

## Community messaging service



Community messaging is a targeted messaging service that allows Devon & Cornwall Police to contact subscribers with a message to help prevent or solve a crime in your local area.

Community messaging also allows you to find out about your next community meeting (PACT), what your local police are doing about issues affecting your area, as well as local crime statistics and trends.

You can choose to receive messages by faxed letter, phone or email.

Information from the public is the best weapon in the fight against crime. Many crimes have been solved because people have responded to police appeals for information.

The police need your help to make your community a safer place. By taking a few moments to fill out a simple form you can help to drive down crime:

<http://www.devon-cornwall.police.uk/GetInvolved/>

## Donate, Don't Dump!

EDDC staff and Councillors are reminded to look through bulging wardrobes and bring in any quality ladies or men's clothes, shoes, bags, accessories and other items to help Save the Children raise more vital funds for their work with children worldwide. 12noon – 2pm, **5 November**, Room 1.

Rachel Perram (Democratic Services Officer)  
01395 517525 (or Ext 2725) [rperram@eastdevon.gov.uk](mailto:rperram@eastdevon.gov.uk)

**We Save the Children Will you?**

## Find out more about funding

### ▶ Music for under 18's



Youth Music often has funding available for activities that provide structured, regular and progressive music-making activities for children and young people. You must be a not-for-profit organisation more than one year old. Click above for more

information or ☎ 02079 021060.

### ▶ Supporting young people

The Joanies Trust has grants of about £1,000 available to registered charities who are working with young people aged 11 to 25. The projects funded must offer intensive support to young people, promote preventative work or lead to the individual's development. In particular they are looking for evidence of consultation with young people. Click above for more information or ☎ 01531 633345.

### ▶ Foundation funding



The Waterloo Foundation has funding available of up to £100,000 to registered charities and not-for-profit organisations with charitable purposes. Grants are awarded for child development and the environment.

### ▶ Youth organisation development

Reaching Out has funding available of between £50,000 and £100,000 to help established not-for-profit groups that work with young people to develop their organisation. Click above for more information or ☎ 0845 605 0240.

### ▶ Basic services in rural areas

The Community and Social Enterprise Fund has funding available to support projects from not-for-profit organisations including parish councils. Grants must be used to directly support the delivery of basic services in rural areas. These can be things like childcare, retail services or renewable energy projects. It is expected the majority of funding for each project will be provided by other sources. Click above for more information or ☎ 07733 264756.

### ▶ Sports clubs



Cash 4 Clubs has funding available to sports clubs that are registered with their sport's National Governing Body or local authority. Grants are up to £1,000 and can be used to improve facilities, purchase new equipment, gain coaching qualifications and so on.

### **Bernard Sunley Charitable Foundation**

This foundation has funding of between £200 and £10,000 available for a wide range of purposes including education, arts, heritage, youth, community conservation, housing and health. Funding is for capital and revenue costs. For more information ☎ 02074 082198.

To find out about funding opportunities for voluntary and community groups and individuals visit our website:

[www.eastdevon.gov.uk/grants](http://www.eastdevon.gov.uk/grants)

Jamie Buckley (Engagement and Funding Officer)  
☎ 01395 517569 (or Ext 2769)  
jbuckley@eastdevon.gov.uk

## Environmental Health performance and customer satisfaction

We hear from the Environmental Health Service that they have introduced a new set of **Customer Service Standards** for the way they deal with different types of service requests. The Service met with a focus group of local residents and business representatives to develop these standards. Currently they are mainly aimed at response times but the intention is to concentrate on time taken to resolve service requests.

Between 1 July and 1 October they received 1074 service requests. Monitoring showed that 80% met the response targets and steps are being taken to further improve. Already customers are responding positively to the improved levels of service – 94% said that they would use the service again.

[http://www.eastdevon.gov.uk/environmental\\_health-eddc](http://www.eastdevon.gov.uk/environmental_health-eddc)

John Collins (Head of Environmental Health & Health Equalities) (Job share with Simon Smale)  
☎ 01395 517567 (or Ext 2767) jcollins@eastdevon.gov.uk

## News from the IDeA (Improvement and Development Agency)

### ► Shared chief executives and joint management: a new report

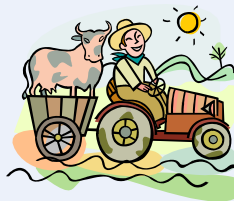
With increasing pressures on local government finances, many councils are looking for efficiencies by developing closer partnerships and collaborative ways of working. A growing number have chosen to share their chief executives and senior management teams. Read how these new arrangements have influenced efficiency savings and the shared services agenda.

### ► Climate change directory of national and regional support



Do you need support for your work on climate change? This directory will guide you through a wide range of guidance available on mitigation and adaptation at national and regional levels.

### ► Year of Healthy Communities calendar: October entries



Find out how Monmouthshire County Council is safeguarding the health of its elderly citizens, discover how Walsall Council is making a short film to investigate the health of its 1,500 mini-cab drivers, and read how farmers are being provided with targeted health checks by the South Western Ambulance Service. Plus explore how Medway Council is reaching out to young parents.

### ► Developing and using customer insight as a strategic asset

This new report demonstrates how seven councils in the West Midlands have increased their understanding of their citizens' needs through the development of customer insight. The project aimed to improve the management of performance and generate more informed decision-making by councillors and senior officers. The findings were shared with other councils at two recent IDeA workshops.

## Communities at the heart of our landscape



Over the past four years the East Devon Area of Outstanding Natural Beauty (AONB) Sustainable Development Fund has provided £287,000 grant to 65 projects, with a total value of over £965,000.

Many of these projects have benefitted communities directly. Green energy advice for community buildings in Uplyme and Northleigh; helping towns and villages enhance their community green spaces such as Honiton's Roundball Woods and the Sidbury Millennium Green (*photo*). The Fund has also supported community enterprise like the establishment of a new farmers' market for Budleigh Salterton and assisting with plans for a new community shop at Offwell.

"With communities at the heart of our landscape, it is also encouraging to see that parishes are coming to the AONB Partnership for support in their parish planning process" said Cllr Bob Collier, Devon Association for Parish Councils representative on the East Devon AONB Partnership. "We have just awarded Shute and Whitford Parish Council a small grant to develop and print the parish plan they are currently working on" he added.

For more information on how your community could benefit from the East Devon AONB Sustainable Development Fund this year visit [www.eastdevonaonb.org.uk](http://www.eastdevonaonb.org.uk) or contact Kimmo Evans 01404 46663.

Other local grants information is available at [http://www.eastdevon.gov.uk/grants\\_news\\_in\\_east\\_devon](http://www.eastdevon.gov.uk/grants_news_in_east_devon)

## Financial management e-learning scheme

The Audit Commission has worked with the National School of Government to produce a unique web-based learning scheme to improve financial management skills in local government. It is flexible, friendly and free to use.



This program gives those who are not finance experts a grounding in the core financial management skills. Its online e-learning modules cover activities from budget management to investment appraisal and it takes around 8 hours of flexible learning time to complete all 10 modules. Those who do not want to dedicate 8 hours to self learning can pick out those elements that they feel will be of benefit.

Councillors and managers (both executives and non-executives) need to be financially literate and understand fully the fiscal environment their organisation operates in. Good financial management and financial reporting are essential elements of good corporate governance and form part of the firm foundations of any organisation. They underpin service quality and improvement and reinforce accountability to stakeholders for effective stewardship and use of resources.

Click [here](#) to use the tool.

## Update from the Local Government Association (LGA)

The LGA has highlighted some of their lobbying successes over the past year:

- ❑ An LGA campaign to raise the profile of recruitment and retention in children's social work received a £58 million funding boost as part of a wider campaign to attract social workers back to the profession;
- ❑ The LGA argued consistently that councils are best placed to tackle unemployment – and councils were given a central role in co-coordinating and delivering the £1billion Future Jobs Fund;
- ❑ LGA's lobbying ensured that local authorities' views were recognised in the Business Rate Supplements Bill, which received Royal Assent on 2 July 2009, giving councils the flexibility to respond to local needs and to use funds raised to respond to local economic difficulties;
- ❑ The securing of a public commitment from Ministers to explore the possibility of revisiting the special grant funding for 2010/2011 to achieve a more equitable distribution of concessionary fares funding;
- ❑ Following extensive lobbying, amendments to the Local Democracy, Economic Development and Construction Bill will address the problems created by the Local Authorities Mutual Limited Appeal Court (LAML) judgement and give local authorities the power to enter into mutual insurance arrangements.

Over the coming months the LGA will increasingly focus on influencing the main political parties as part of the LGA General Election strategy to secure the best possible outcomes for local authorities from an incoming Government. It will continue to emphasise that local government is the most efficient part of the public sector, and that Government should look to reduce inefficiencies in national bodies rather than cut local government funding. It will emphasise that constitutional reforms in Westminster must go hand-in-hand with changes to the relationship between central and local government and the responsibilities of councils.

As a membership organisation the LGA is constantly aware of the need to offer tangible benefits and value for money, particularly in the current financial climate. The Getting Closer programme continues to reduce costs and improve services (further details can be found at [www.lga.gov.uk/gettingcloser](http://www.lga.gov.uk/gettingcloser)) and the LGA Resources Panel has undertaken a review of subscriptions and will present its recommendations to LGA Executive on 10 December.

The LGA Chief Executive's monthly report to the LGA Executive which summarises the work of the LGA Group over the previous month is now available online: [www.lga.gov.uk/cxreport](http://www.lga.gov.uk/cxreport).

## Car park lighting to be switched off during 'sleeping hours'



Most of EDDC's car parks will cease to be lit throughout the 'sleeping hours' of the night in a move to save cash **and** reduce the Council's carbon footprint. A few of the district's car parks have never been lit at night – and these will obviously not be affected by the change. In all, 39 car parks will be part of the late evening switch-off.

The lighting that normally stays on throughout the hours of darkness will be switched off with effect from 11pm in the evenings. The lights will come back on at 6am and will remain lit until daylight arrives.

The move follows a successful trial in the Land of Canaan and Hind Street car parks in Ottery St Mary, which has been running since November 2008. This led to a decision to turn off all EDDC car park lighting between 11pm and 6am to reduce utility bills and to make a small impression on the carbon emissions caused by electricity usage.

The switch-over began on Wednesday 28 October and will be completed this weekend.

## News from the Rural Services Network (RSN)

### ▶ Government agency misses rural target



The Government's housing agency has failed to meet its target for building affordable rural homes. The Homes and Communities Agency missed its internal target of 2,800 new units for rural affordable housing by 13.75%. It completed only 2,415 affordable rural housing units during 2008/09 and now downscaled the number of homes it hopes to complete.

### ▶ Carnegie launches rural manifesto

Rural areas face severe deficiencies in service delivery, a leading charity has warned. The Carnegie UK Trust issued the warning in its rural manifesto, launched by the charity on 20 October. The document draws upon evidence gathered by 44 organisations that rural community action is helping to improve people's lives.

### ▶ Rural firms braced for increase in crime



Darker winter evenings will trigger a rise in rural crime, business leaders have warned. The Country Land and Business Association is forecasting an increase in incidents - especially in more isolated rural areas. Burglaries and thefts of machinery and vehicles are expected to rise, with a likely increase in activities such as fly-tipping on private land.

### ▶ Rural broadband vital, admits minister

Government minister Stephen Timms has pledged to make faster rural broadband a priority. Mr Timms, Minister for Digital Britain, said it was wrong for rural businesses and communities to suffer from poor internet connections. "It would be socially and economically unjust for rural Britain to be dependent on slow and unreliable broadband."

### ▶ Government tax on holiday homes



Owners of second homes face a property tax under new legislation set to be announced by the Government. Chancellor Alistair Darling is expected to make the announcement in his Pre-Budget Report in November. The move will hit an estimated 60,000 property owners who let out second homes - many in rural areas - for a large part of the year.

Note: Members of RSN (which includes Councillors and Council staff) can gain free and full access to RSN Online by [registering](#).

## Exmouth Visitor Centre Trust

### Climate change and bio-diversity

A large part of the philosophy of the Exmouth Visitor Centre Trust is to encourage a greater understanding of climate change and how it affects the world around us.

You are invited to attend The Judith Telfer Centre, Gypsy Lane, Exmouth at 7.30pm on **12 November** when Dr Lynsey McColl (Met Office Hadley Centre) will explain how declining bio-diversity can exacerbate climate change.



Entry is free, all are welcome and booking is not necessary. Programmes available from the Town Hall, Library and Information Centres.

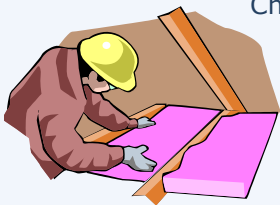
☎ 01395 264520.

## In the press

### ► Think-tank urges more power for councils to raise capital

Councils must be given new revenue and capital raising powers if Britain is not to face 'a new era of crumbling infrastructure', says the New Local Government Network. Local authorities are facing a 'tsunami of a public recession', said its director.

### ► Fury as winter fuel money is threatened



Charities such as Age Concern have reacted with fury after the Audit Commission urged the Government to scrap fuel payments for the elderly and encourage them to double-glaze windows and lag lofts.

### ► Families flee cities to find better schools

Cities are losing thousands of pupils a year as families move out when their children reach school age, according to new figures from the Office for National Statistics.



### ► Volunteers flock to help cut council costs

As local authorities look to make savings, Brighton and Hove council is having great success with its scheme to recruit volunteer urban shepherds to tend flocks of sheep that will reduce grass-cutting costs.

### ► No limits on flights over national parks

The Department for Transport has dismayed the Transport Select Committee by rejecting pleas to limit the number of flights over Britain's national parks.

### ► Mapped online... all the crime up your street



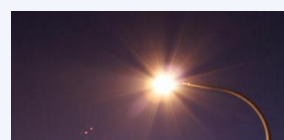
Homeowners worried that crime in their neighbour-

hood is on the increase now have the proof at their fingertips. A new interactive map gives them the power to find out just how safe their street is, say ministers. The website, called CrimeMapper, gives statistics for each area. All users need to do is feed in their street name or postcode.

### ► Coastal towns have most bankruptcies

Britain's coastal towns suffer from the highest level of bankruptcies as the decline in shipbuilding, fishing and seaside tourism continues to take its toll amid the recession, according to research by accountancy group Wilkins Kennedy.

### ► Street lights could hurt our health



Bright street lighting and office blocks that remain lit all night could be affecting our mental

health, scientists have warned.

### ► Companies fear consequences of higher rates

Small companies in central London have warned that they fear going bust if planned large rises in business rates go ahead. While business rates across most of the country are set to fall, bills in Westminster are expected to rise by an average of 38% under the Government's revaluation of rates for the next 5 years.

## Production information

Democratic Services produces this weekly information sheet every Friday for Members of East Devon District Council. Please contact Diana Vernon if you have any comments about the newsletter. **If you wish to reproduce any of the images used in The Knowledge, please contact the editor who will seek permission from the contributor:** ☎ (01395) 517541 or Extension 2741. Email: [dvernon@eastdevon.gov.uk](mailto:dvernon@eastdevon.gov.uk)

**Submissions:** If you have items that you wish to be included in the next issue, contact Democratic Services:

☎ (01395) 517542 or Extension 2742. Email: [knowledge@eastdevon.gov.uk](mailto:knowledge@eastdevon.gov.uk)