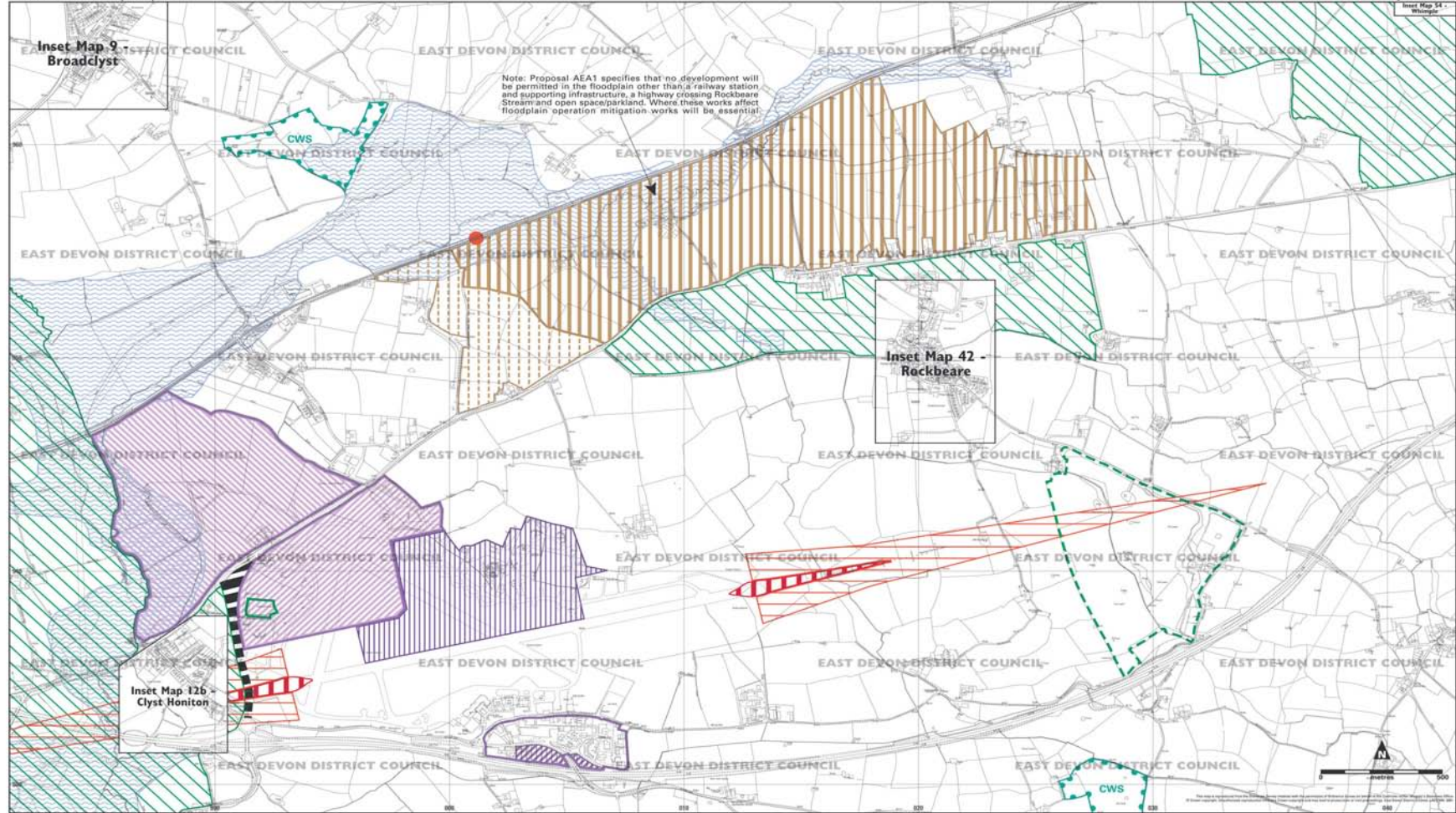


APPENDIX 1

East Devon Local Plan - Revised Deposit - September 2003

Exeter Area of Economic Activity - Inset 24



- POLICIES AND PROPOSALS**
- Land of Local Amenity Importance (EN5)
 - Green Wedge (EN4)
 - New Community Boundary (AEA1)
 - New Community - Land Identified for Development following Airport Engine Testing Relocation (AEA1)

- Proposed Railway Station (Indicative Site Only) (AEA1)
- Site of Intermodal Freight Facility (AEA2)
- Major Employment Site (Skypark) in AEA (AEA3)
- Airport Terminal Development Site (AEA4)
- Clyst Honiton Bypass (AEA5) (Indicative Route)

- FOR INFORMATION**
- Boundary of Existing/Proposed Employment Area (E1)
 - Employment Site with Planning Permission (E1)
 - County Wildlife Site (EN9)
 - Historic Park or Garden (EN18)

- Indicative Fluvial/Tidal Floodplain (EN26)
- Airport Public Safety Zone (TA10b)
- Airport Public Safety Zone - Individual Risk of 1 in 10,000 per year or greater (TA10a)

Note: All of Inset Map Area falls Within the Aerodrome Safeguarding Zone

This Revised Deposit version (September 2003) of Inset 24 - Exeter Area of Economic Activity - to the East Devon Local Plan supersedes the version in the Deposit plan (dated January 2002)

This Revised Deposit version incorporates the following changes:
 RD24 (A), RD24 (B), RD24 (C), RD24 (D), RD24 (E), RD24 (F), RD24 (G), RD24 (H), RD24 (I)
 (See schedule in Revised Deposit plan)

