

Quick links

- LocalGov.co.uk
- LG Improvement & Development
- South West Councils' News
* new edition *
- District Councils' Network
- Grants and funding
- Rural Services Network
- East Devon AONB
- Blackdown Hills AONB
Jan/Feb e-news
- Exe Estuary Partnership
- EDDC Countryside Service
- Jurassic Coast
- Jurassic Coast Trust
- Campaign to Protect Rural England: Devon
- THG (Thelma Hulbert Gallery)
- Devon & Cornwall Police Authority
- Police & Crime Commissioners
- EDVSA (East Devon Volunteer Support Agency)

EDDC News



➤ Help us to improve our services to tenants

Contact us:
knowledge@eastdevon.gov.uk

Democratic Services Officers

Diana Vernon 01395 517541
 Christopher Holland 01395 517543
 Chris Lane 01395 517544
 Debbie Meakin 01395 517540
 Alethea Thompson 01395 517525
 Hannah Whitfield 01395 517542

Meetings

Please note meetings shaded pink are **NOT** open to the public

Where ➤ is shown - click the name of the meeting to link to the agenda

Meeting	DSO	Date	Time	Location
➤ Licensing & Enforcement Sub Committee	CL	Tuesday 17 January	09:30	Council Chamber
➤ Special Overview & Scrutiny Committee 2012/13 Budget & Service Plans Members of the Council who do not sit on this Committee are welcome to attend as observers. Members of the public are welcome to attend this meeting from 11:30	DM	Wednesday 18 January (Lunch will be provided for Committee Members and Portfolio Holders only)	09:00* 11:30	Council Chamber *09:00 Briefing for Members only Committee Meeting commences 11:30
Asset Management Forum	CL	Thursday 19 January	09:30	Committee Room
➤ Audit and Governance Committee	CEH	Thursday 19 January	14:30	Council Chamber
Planning Inspections Committee	CEH	Friday 20 January	TBA	CANCELLED
Strategic Development and Partnerships (Portfolio Holder Andrew Moulding)		Monday 23 January	15:30	Room 1
Licensing & Enforcement Sub Committee	CL	Tuesday 24 January	09:30	Council Chamber
Standards Committee	CEH	Tuesday 24 January	10:00	Committee Room
Overview and Scrutiny Committee	DM	Thursday 26 January	18:30	Council Chamber

Cabinet decisions

Members are notified of decisions from the Cabinet meeting held on 11 January 2012. Please click on the following link to read the minutes of the meeting:

➤ http://www.eastdevon.gov.uk/cabinet_mins_110112.pdf

Cabinet decisions will become effective on **19 January 2012** at 9.00am unless "called in". The published procedure for a "call in" is on pages 137-139 of the Council Constitution, or contact Democratic Services for assistance or explanation. Recommendations by Cabinet to Council are not subject to "call in".

Portfolio Holder's decisions

Decisions put to Portfolio Holder

Decisions will be published in a future edition of The Knowledge

Environment

Iain Chubb

Price Increases for Bulky Household Waste Collections 2012-2013

The number of collections per year is in the region of 300 - a service which is used by householders who cannot take items to the County Council Household Waste Recycling Centre. These are items such as chairs, fridges, washing machines, beds and mattresses, from private premises.

New documents in the Members' Area

Clerks & Councils Direct – January newsletter and Councils Suppliers Guide & Yearbook

It is recommended for 2012/13 that the system of charging for up to 5 items and for 6 - 10 items be continued. It is proposed that charges increase to cover the increased service cost. The charges to be £27.50 + 20% VAT = £33.00 (£32.00 in 2011/12) for up to 5 items and £50.00 + 20% VAT = £60.00 (£58.00 in 2011/12) for 6 - 10 items.

Further details: Paul Deakin, Waste & Recycling Manager, Ext 1517

Environment

Iain Chubb

Price Increases for Schedule 2 Waste - 2012/13

It is recommended that the price for 2012/13 be increased to cover any increase in the service and supplier charges:

Bin Size	Proposed charge for 2012/13	Charges in 2011/12
180 litres	£104.17 + 20% VAT = £125.00	£120.00 (inc VAT)
240 litres	£154.17 + 20% VAT = £185.00	£175.00 (inc VAT)
660 litres	£291.67 + 20% VAT = £350.00	£340.00 (inc VAT)
1100 litres	£425.00 + 20% VAT = £510.00	£500.00 (inc VAT)

The costs for this service have been based on commercial prices available in the area plus on-costs. The prices include for a free recycling collection. It may be necessary at some stage in 2012/13 to review the charges as Defra are at present undertaking a review of the regulations and the way some users are charged.

Prices for Bin/Box replacements

It is recommended that the prices for bin replacements for 2012/13 remain the same as there is sufficient stock and supplier charges have not increased:

Replacement wheeled bin	£25.00 + 20% VAT = £30.00
Replacement kerbside boxes	£ 5.00 + 20% VAT = £6.00
Replacement food kerbside bin	£ 5.00 + 20% VAT = £6.00
Replacement indoor food caddy	£ 2.50 + 20% VAT = £3

Further details: Paul Deakin, Waste & Recycling Manager, Ext 1517

Fire and Rescue National Framework for England Consultation

A public consultation on the draft Fire and Rescue National Framework for England has now begun and will run until 19 March 2012.

The National Framework sets out the priorities and objectives for fire and rescue authorities in England in connection with the discharge of their functions. The draft Framework marks a key milestone in resetting the relationship between fire and rescue authorities and Government. It

proposes moving away from prescription, enabling fire and rescue authorities to deliver their services in a way that makes sense locally while continuing to meet the wider needs of national resilience. Government retains an overarching responsibility for national resilience at a strategic level.

The consultation document is available at <http://www.communities.gov.uk/publications/>



Colyton Post Office

Post Office Ltd confirm that they are proceeding with the proposal to trial a local service from Wilkies, Market Square, Colyton. This will trial for 12 months and during this time Post Office Ltd will carefully monitor the situation to ascertain if this service meets the needs of the local community and provides a commercially viable alternative to the way the services are currently offered. The success of the trial is, to a great extent, reliant on customers using this service on a regular basis. Customers will benefit from the extensive range of opening hours, including Saturday afternoon and Sunday opening, and longer opening times throughout the week. The current branch will close on 4 February; the new service opens at Wilkies on 6 February 2012.

In the national press

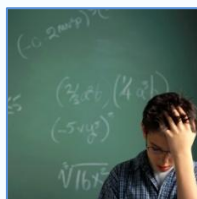


➤ 17-mile diversion for 75 yards of roadworks

A 17-mile diversion has been set up for motorists to avoid a 75-yard stretch of roadworks. A Devon County Council spokesman said the diversion was so long as it would not be possible for HGV vehicles to negotiate smaller roads.

➤ Minister calls satnav summit

Transport Minister Norman Backer has called a summit to encourage highway authorities, mapping companies and satnav manufacturers to work more closely together to provide drivers with accurate information on traffic restrictions such as narrow roads or low bridges. The event will take place in early March, a month before councils gain new powers to classify their own roads to better direct traffic and so affect how they appear on maps.



➤ Fears for academies after eight need rescuing

Eight academy schools in financial difficulty were rescued by a Department for Education quango over the past 18 months at a cost of £10.7 million, intensifying concerns in Whitehall that state schools moving outside the local authority system were not being adequately supervised by officials.

➤ Councils must ringfence crisis cash for poorest, say charities

Government plans to hand control of crisis funds for vulnerable people to councils, while cutting the money available, risk driving the destitute into the hands of loan sharks and forcing victims of domestic violence to stay with abusive partners, a coalition of charities warns. The 20-strong group, which includes Barnardo's, Save The Children, Women's Aid and Family Action, say it fears councils already facing deep cuts will use the cash they get to replace the abolished Social Fund for other purposes, leaving the poorest people facing "catastrophic" consequences.



➤ Shortfall of 450,000 primary school places

Figures have revealed that the English school system will need to provide more than 450,000 primary school places by September 2015. The LGA responded by calling for better forecasting methods for future demand to identify where the big increases are likely over five to ten years.

➤ Subletting tenants to face prison

Social housing tenants who unlawfully sublet their homes could be jailed for up to two years under plans to be announced by the Government.

➤ Monthly bin collections may come in for first time

A Welsh council has floated the idea of bin collections every month or three weeks. Officers at the Isle of Anglesey Council have suggested that less frequent collections would be needed to meet recycling targets in a new report. According to research by the LGA, just one in five local authorities is planning to apply for Government money to pay for more frequent weekly rubbish collections. However, more would be interested in the cash if they are allowed to use the cash for weekly collections of food scraps.

Budleigh Salterton Science Forum

3 February 2012



Expert Speakers will explain and lead discussion of issues raised. Speakers - Dr Ray Hall - London University, Roger Martin - Chair, *Population Matters*, Dr Andrew Hinde - Southampton University

Tickets, price £11, for the full day (from 9.15am - 4pm) are available from 16 January from the TIC in Budleigh, by post from the Festival Office or on the door. Lunches are available to purchase on the day.

Visit the [website](#) for more information.

Can you guess what this is?



Silage bale fungus! (underside)
Photo by Peter Vernon

Democratic Services produces this weekly information sheet every Friday for Members of East Devon District Council. Please contact [Diana Vernon](#) if you have any comments about the newsletter.