

3.0 CONTEXT

3.6 Public Transport

Pedestrian and cycle connectivity

The proposals encourage pedestrian and cycle connections to Honiton town to the east and will promote easy access to existing and future employment area to the north.

Routes within the site connect public open spaces and have been designed to allow recreational movement for those within the site, as well as those nearby. Dog walking and cycle routes are promoted.

Bus services

The nearest bus service is from the 52A / 52B, running from Exeter Bus Station to the Honiton High Street (Job centre and Lace Walk); several of which stops are within a short walk from the site. The hours of service range from approximately 07:00 to 19:00, with occasional late evening services for Honiton to Exeter.

Refer to Highways consultant report for further public transport information and connectivity.

Honiton Railway Station

Honiton Railway Station opened in 1860 and is currently operated by South West Trains, providing services on the London Waterloo to Exeter route. A popular route is the train from Honiton to Exeter for many high order services Exeter has to offer, taking approximately 25 minutes. The station is situated off of Church Hill, a short walk from the central high street, highlighted on the plan.



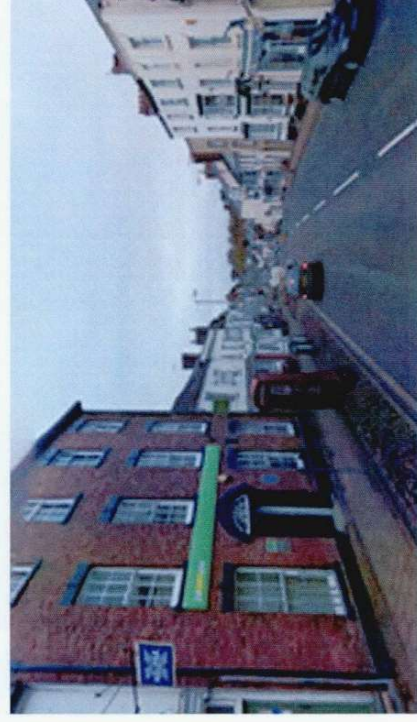
Public Transport within Honiton

4.0 CONTEXT / USE OF LOCAL VERNACULAR

Welbeck Strategic Land believes in developing proposals which complement the character of the town and surroundings, working with the natural grain of the land, utilising natural and man made features.

In exploring the vernacular around the central high street it became apparent that the use of render appears frequently. Whilst a degree of tonal variance is apparent, the theme is very much of light, pastel shades, included whites, creams, to soft blues and yellows. This use of render transcends through to the residential development in Honiton, including the site-adjacent Old Elm Road housing. Again soft render is found in plentiful supplies, however the residential brings forth brickwork also, and in many occasions a combination of brickwork and render as a facade choice. Amongst the abundance of brick and render, there are also rarer moments of timber cladding used in sections to emphasise specific areas of interest, feature windows and such.

High Street, Honiton



4.0 USE OF LOCAL VERNACULAR

